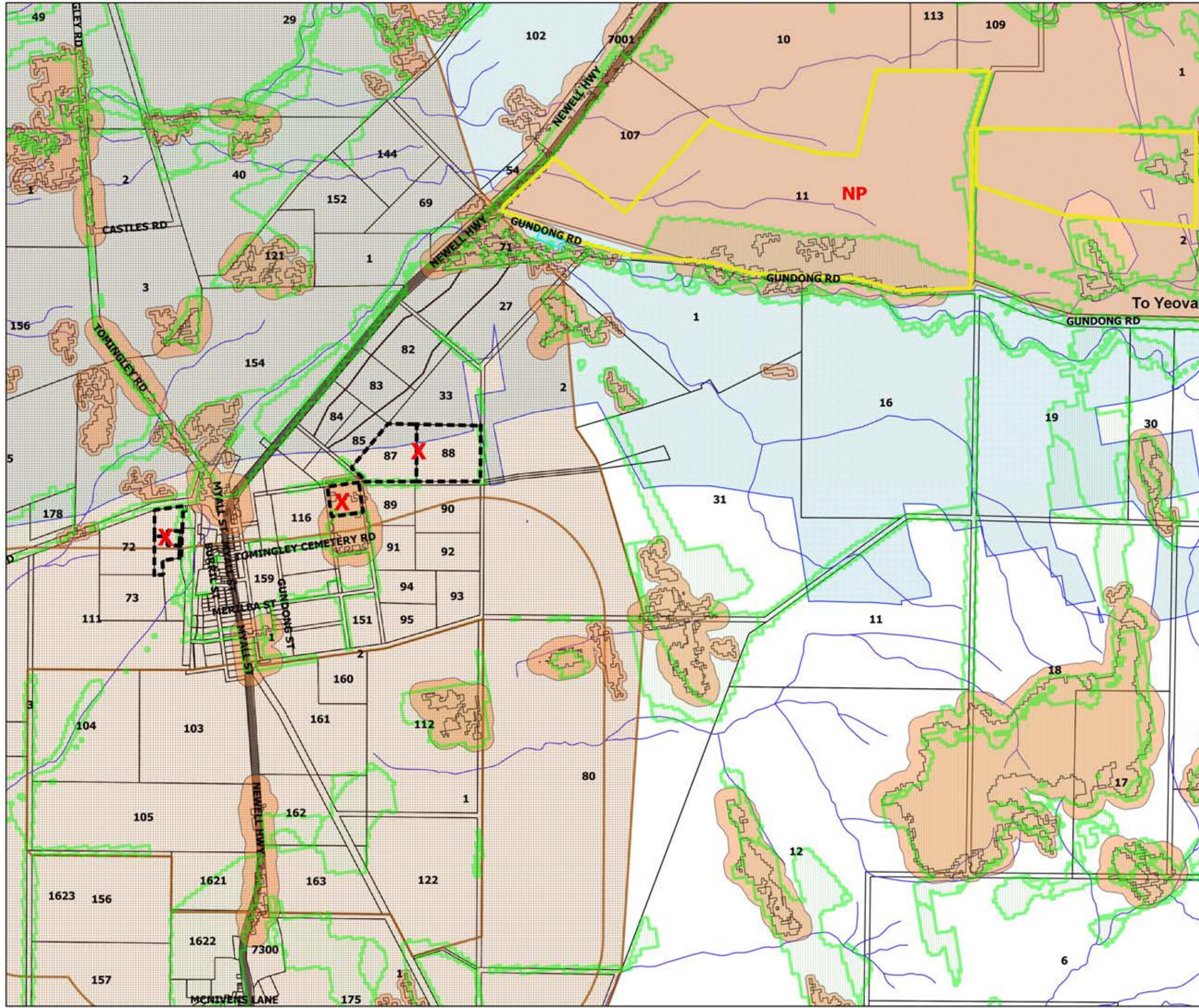


To Narromine

To Dubbo

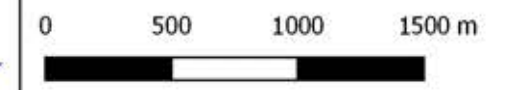
TOMINGLEY - Changes in 2018 Strategy

Comparison to GHD 2009/2013 Strategies & 2017 Nominated Sites



Legend

- Watercourse / Drain
- Mineral Potential (NSW Gov.)
- Bushfire Prone Land 2003
- Biodiversity Potential
- Groundwater Vulnerability
- Sensitive Use (non-ag.)
- Existing Zone R5 (LEP)
- GHD2013 Preferred Sites
- 2017 Nominated Sites for Review
- GHD2013 Rec. Site REMOVED
- GHD2013 Not Preferred Site (Also NOT Recommended 2018 Strategy)
- 2018 Strategy Preferred (from Nominated Sites or 2013 Preferred Sites)



To Parkes

To Yeoval

NP

X

X

X

0

500

1000

1500 m